



DENVER
THE MILE HIGH CITY

Denver's Future

City Club of Denver

FOR CITY SERVICES VISIT | CALL
DenverGov.org | **311**

- Building Trades hit hard
- Aging population
- Neglected/unfunded infrastructure
- Constrained federal and state budgets
- Affordable housing (construction defects)

- Population increasing (18- 30 years)
- Housing starts and values up
- Office space is filling
- Denver Public Schools student count up (families are coming back)
- Construction is happening all over the City and the Front Range

- Union Station
- RTD Transit (east, gold, north metro, expansion of current lines)
- Downtown
- 9th & Colorado site
- Gates Rubber site
- Stapleton (north of I-70)



DENVER
THE MILE HIGH CITY

North Denver Cornerstone Collaborative

World-class cities begin with great planning

Initiative Overview

FOR CITY SERVICES VISIT | CALL
DenverGov.org | **311**

Mayor Hancock's Vision Denver's Corridor of Opportunity

The North Denver Cornerstone Collaborative (NDCC) is part of a larger comprehensive envisioning effort by Mayor Michael B. Hancock to energize a nearly **23-mile corridor** linking Denver Union Station to Denver International Airport along I-70 & RTD's east line



The NDCC represents a unique and historic opportunity to:

- **Strategically align** six projects
- **Convene, coordinate and support** existing project planning efforts
- Facilitate the creation and execution of **Public/Private Partnerships**
- Provide **regional communications/community engagement** to help drive shared opportunities

Based upon ongoing community engagement, the following high priority issues & needs have been identified:

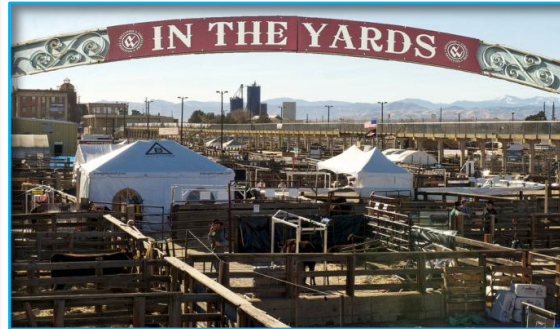
- Access to range of services & basic retail
- Improve public safety
- Environmental concerns
- Enhance connectivity
- Proximity to heavy industry
- Empower neighborhood



Globeville & Elyria-Swansea Neighborhood Plans



National Western Center



Brighton Blvd. Corridor Redevelopment



River North (RiNo)



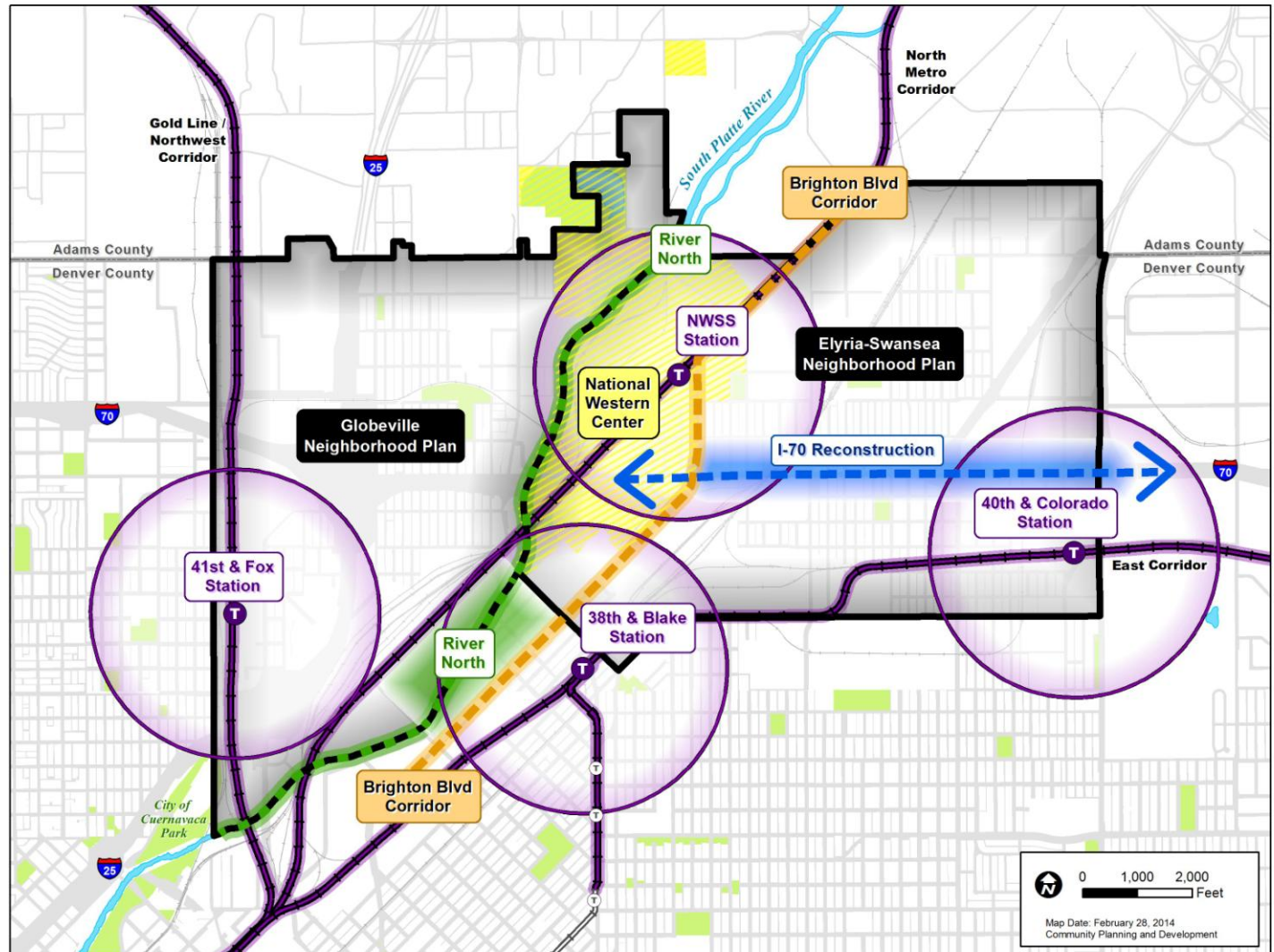
I-70 Reconstruction



RTD Station Development



Project Overview & Impact



Character Zones

MAIN STREET ZONE

- Streetscape design priority on placemaking, side-walk activity, and pedestrian connectivity. Design priorities include:
- Enable a diversity of mixed-use and industrial users throughout the corridor
 - Celebrate the character of River North
 - Stimulate activity along the street
 - Ensure pedestrian safety and comfort
 - Encourage multi-modal transportation
 - Provide on-street parking
 - Promote slower speeds and an increased number of traffic signals
 - Implement safe pedestrian and bike connections across Brighton Blvd. on 35th St. and/or 36th St. to transit station.



EDUCATION, INDUSTRY & DEVELOPMENT ZONE

- The streetscape design balances placemaking and multi-modal transportation needs. The character of the streetscape will create a 'front door' for future industrial and educational development. Design priorities include:
- Encourage multi-modal transportation
 - Enable a diversity of mixed-use, educational and industrial users
 - Celebrate the character of River North
 - Ensure pedestrian safety and comfort
 - Limit number of traffic signals



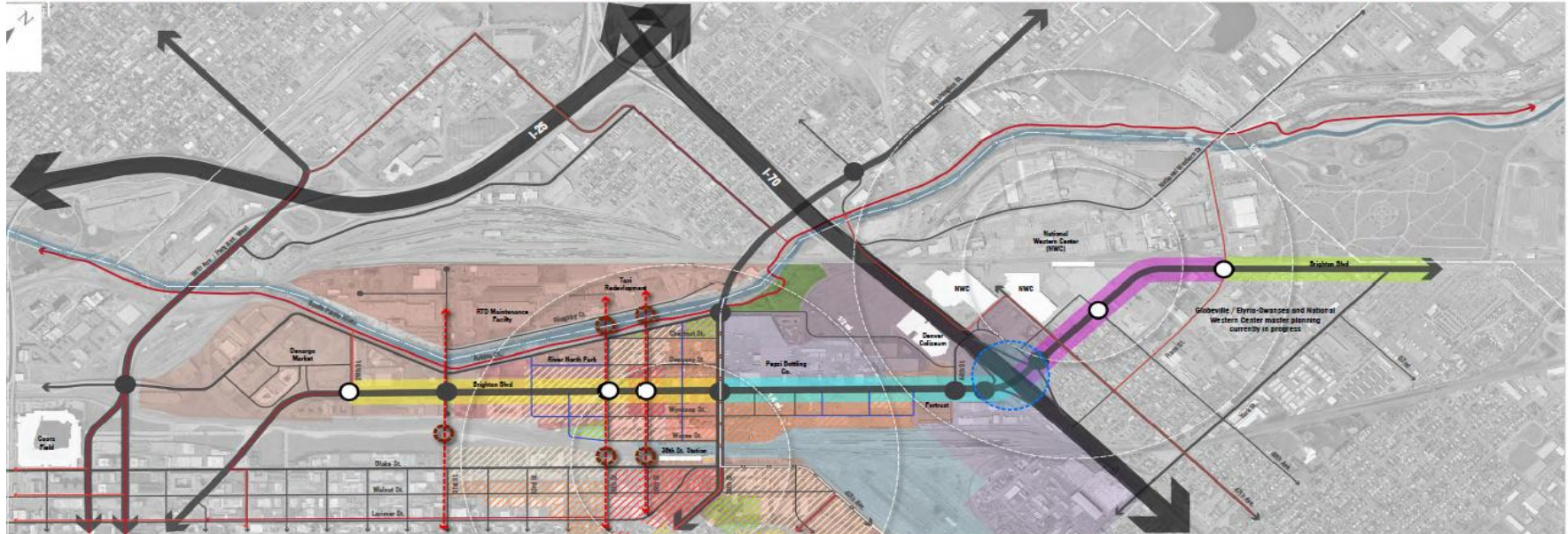
NATIONAL WESTERN CENTER ZONE

- The streetscape design places a priority on placemaking, as Brighton Boulevard will become the 'front door' to National Western Center and an entertainment destination. Design priorities include:
- Stimulate activity along the street
 - Accommodate large events
 - Ensure pedestrian safety and comfort
 - Encourage multi-modal transportation
 - Implement safe connections to National Western light rail station
 - Provide on-street parking and/or drop off zones
 - Enable wider sidewalks for increased pedestrian activity
 - Promote slower speeds and an increased number of traffic signals

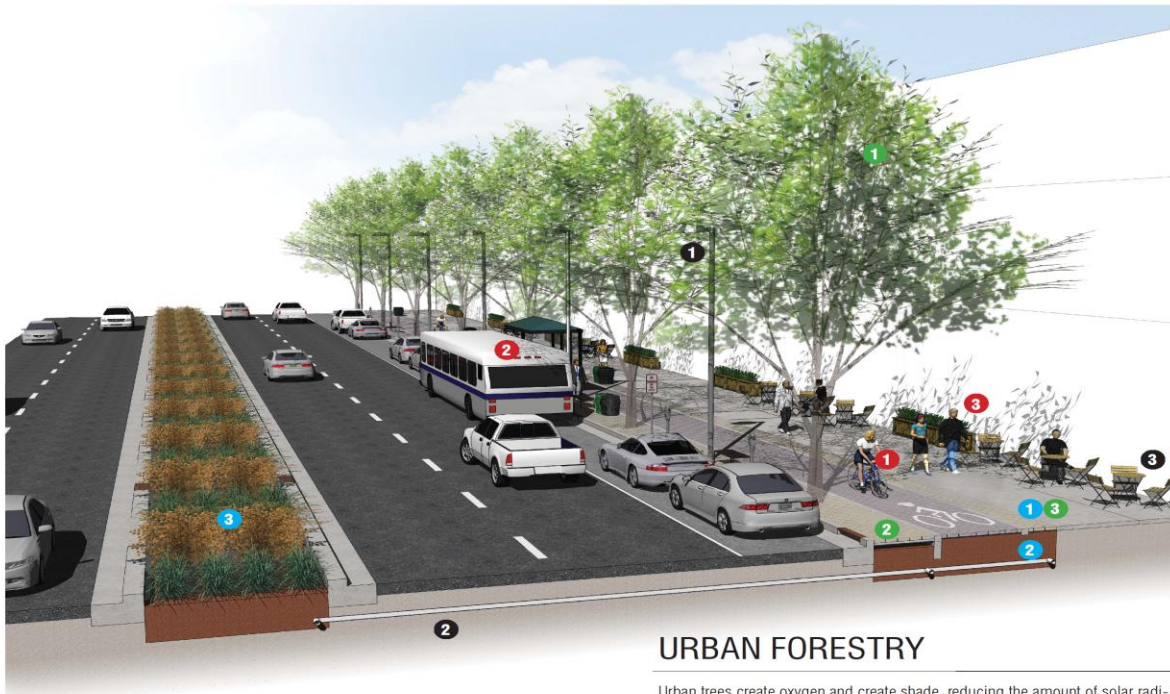


NORTHERN ZONE

- The streetscape design creates a consistent, welcoming frontage for existing industrial uses and Riverside Cemetery. Design priorities include:
- Encourage multi-modal transportation
 - Ensure pedestrian safety and comfort
 - Provide on-street parking
 - Limit number of traffic signals
 - Respect relationship with Riverside Cemetery



Sustainability Strategies



This diagram does not illustrate any specific streetscape area or option. It depicts potential streetscape elements and sustainable design solutions that could be implemented throughout the Brighton Boulevard corridor.

MULTI-MODAL TRANSPORTATION

Brighton Boulevard will become a multi-modal transportation corridor, supporting transit, bikes, pedestrians and cars.

- 1 Continuous bike facilities throughout length of the street
- 2 Bus stops with seating, lighting and shelters
- 3 Continuous detached pedestrian sidewalks

STORM WATER TREATMENT

Paved streets increase storm water runoff, and the amount of pollutants in our waterways. Brighton Boulevard will treat all storm water runoff from the roadway and sidewalks.

- 1 Porous pavements on bike lanes and sidewalks allow runoff to infiltrate through the pavement into the soil below, decreasing the amount of runoff
- 2 Storm water is cleaned as it infiltrates through specially designed soils that capture pollutants.
- 3 Landscape areas within potential median provide storm water detention (reducing runoff rates) and additional water treatment capacity

RESOURCE & ENERGY EFFICIENCY

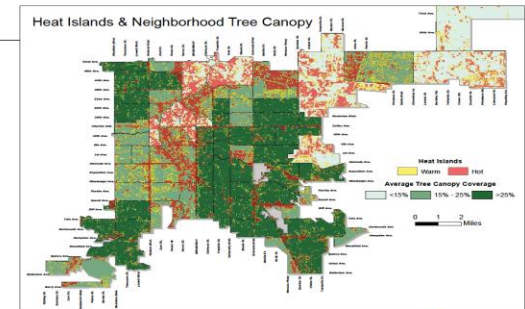
Brighton Boulevard will include recycled materials and energy efficient lighting to reduce energy use and its carbon footprint

- 1 LED streetlights
- 2 Recycle roadbase
- 3 Street furnishing with recycled materials

URBAN FORESTRY

Urban trees create oxygen and create shade, reducing the amount of solar radiation absorbed by the street, which contributes to the "urban heat island" effect (increased temperatures).

- 1 A continuous street tree canopy shades the streetscape.
- 2 Tree root area is increased by suspending paving on grates around trees to allow pedestrian circulation, while preventing soil compaction
- 3 Light colored paving reflects sunlight and decreases amount of sunlight absorbed during the day.



I-70 East Project

Swansea Highway Cover

Cubierta de la Autopista en Swansea

Partial Cover Lowered: Modified Concept

Paso a Desnivel Parcialmente Cubierto Modificado



Artistic Concept *Concepto Artístico*

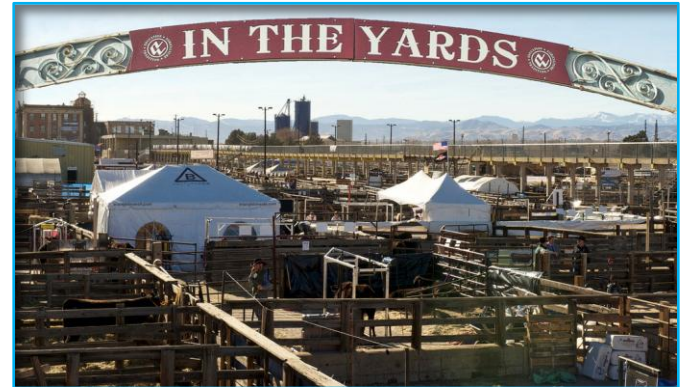
Swansea Highway Cover
Cubierta de la Autopista en Swansea

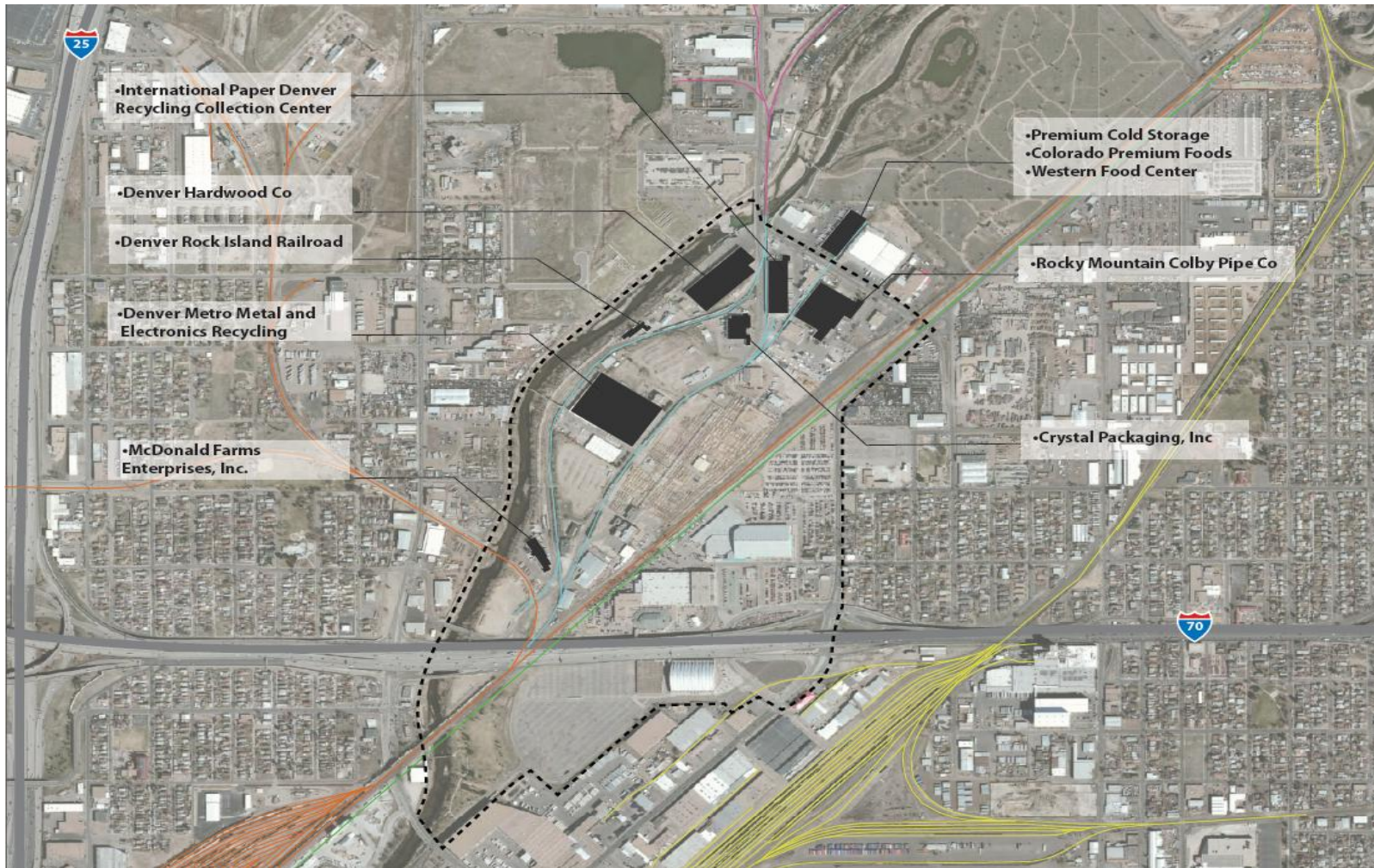
Partial Cover Lowered: Basic Option
Paso a Desnivel Parcialmente Cubierto Básico



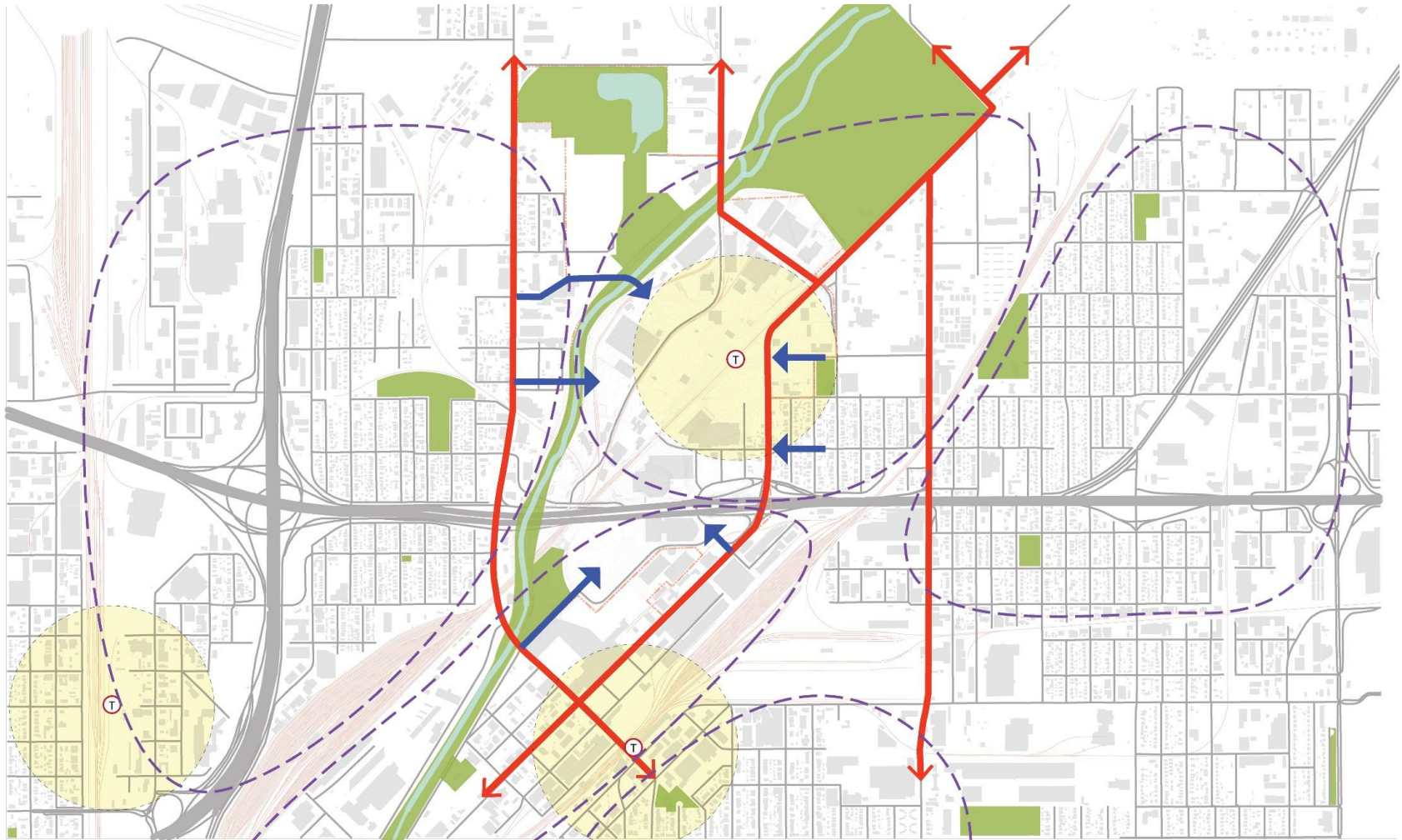
Artistic Concept *Concepto Artístico*

National Western Center





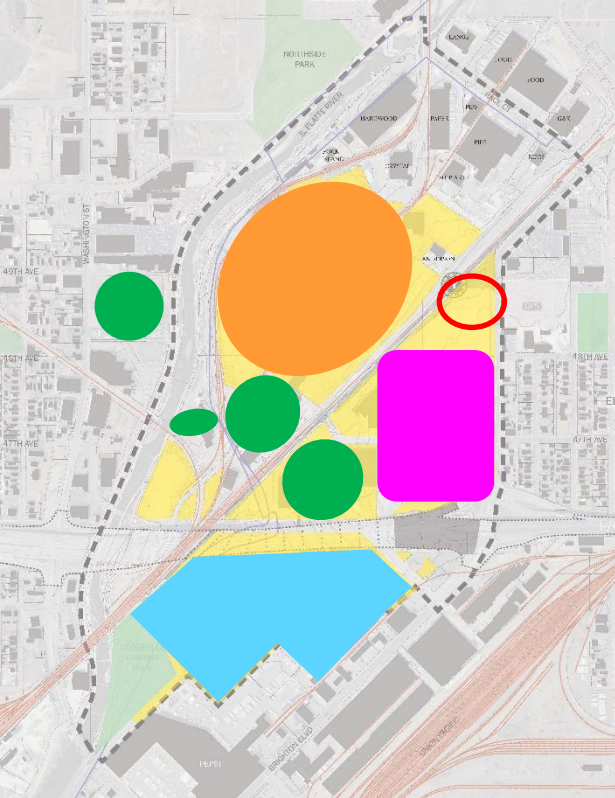
Creating Community Connections



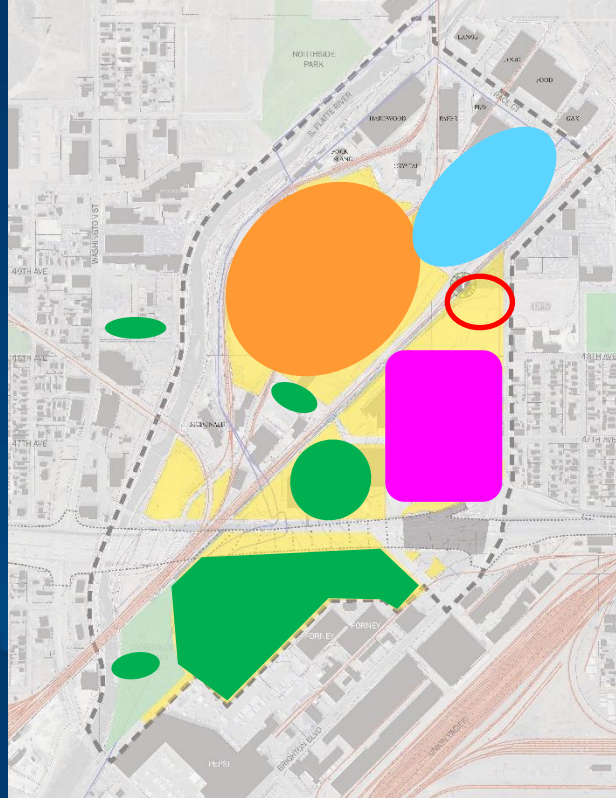
NWC PROGRAM LOCATION OPTIONS



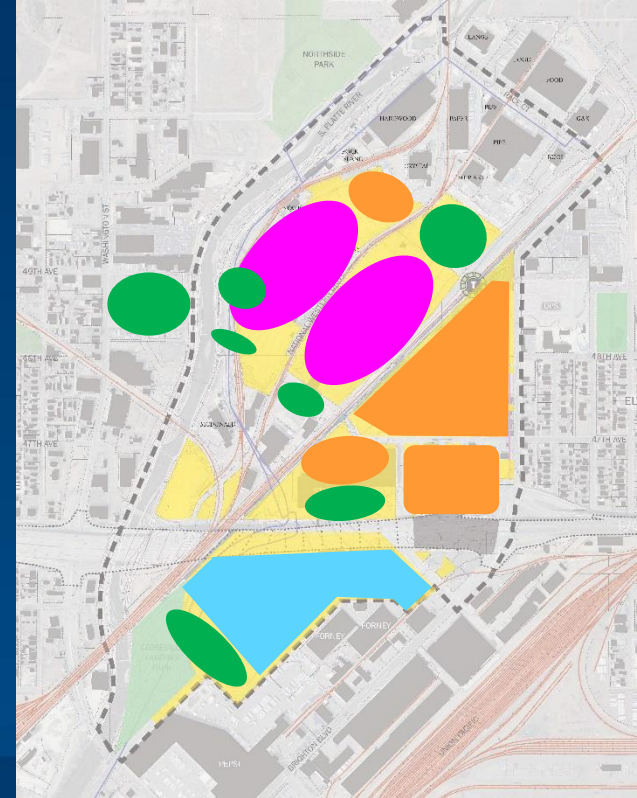
DENVER
THE MILE HIGH CITY



A



B



C

-  MULTI-USE
-  LIVESTOCK
-  EQUESTRIAN
-  PARTNERS

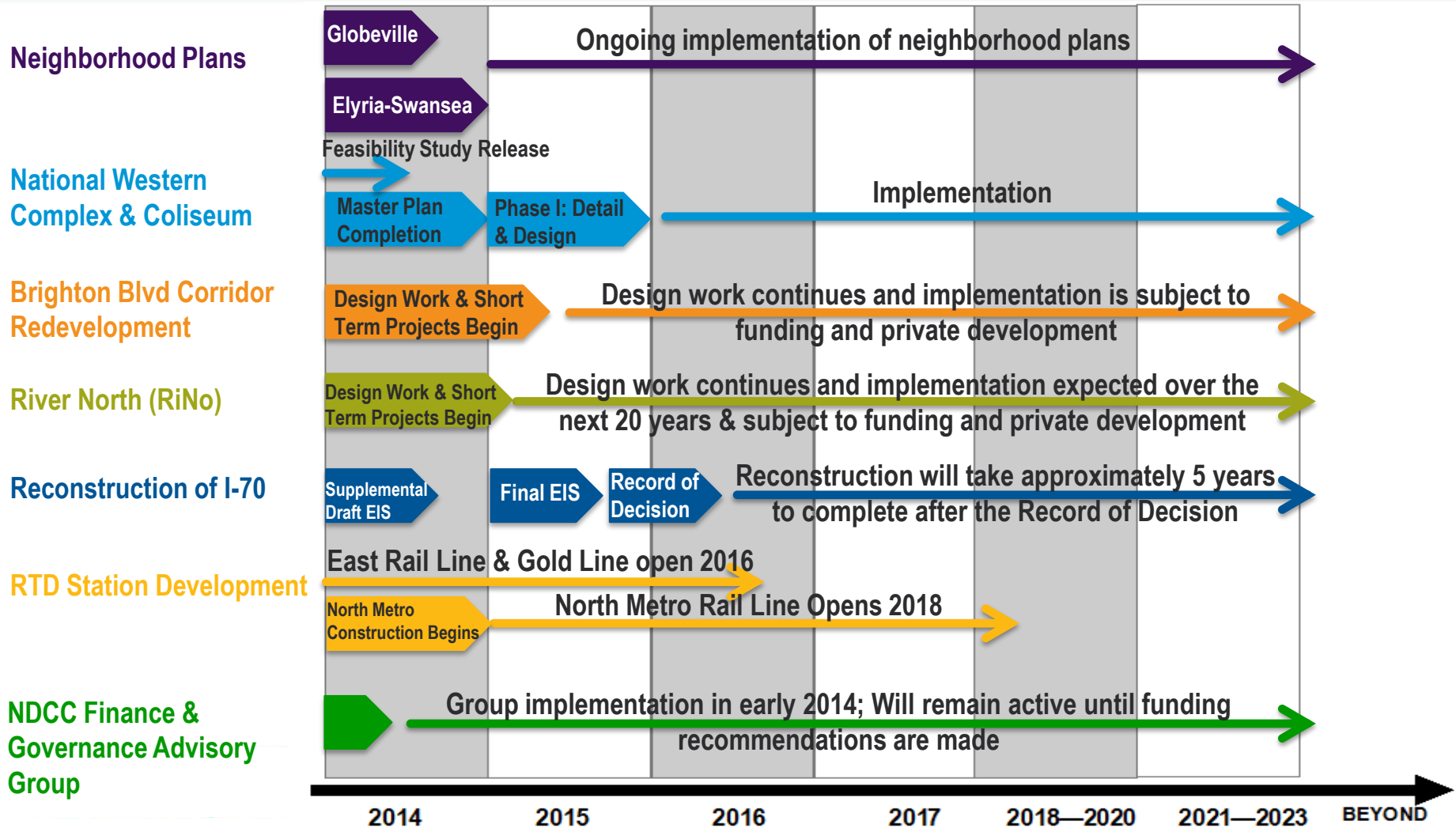
FOR CITY SERVICES VISIT DenverGov.org | CALL 311



Mid Year Key Accomplishments

- **Jumpstarted the master planning effort** for the National Western Center
- **Developed a Health Impact Assessment (HIA)** for all three neighborhoods
- RTD **broke ground on the North Metro Line** which will advance connectivity in neighborhoods
- **Produced a market-based feasibility study** that provided facility recommendations for the National Western Complex and Denver Coliseum
- **Produced the Brighton Blvd. Schematic Redevelopment Project report** that provides multi-modal vision for this gateway into Denver
- **Engaged elementary school students** in the planning process of CDOT's I-70 East project through the creation of models
- City Council voted to **adopt a proclamation** in support of CDOT's Partial Cover Lowered Alternative
- **Launched the Mayor's Finance & Governance Advisory Group** that will creatively develop finance recommendations for all projects
- **Selected CH2MHill to begin detailed design work** on Brighton Blvd. and RiNo

- CDOT to release the Supplemental Draft EIS for the I-70 east to include public comment period
- Completion of Globeville & Elyria-Swansea Neighborhood Plans
- Identify a preferred master plan for the National Western Center in collaboration with CSU, History Colorado, Denver Museum of Nature & Science and the NWSS
- Advance design work on Brighton Blvd.
- Develop RiNo Park Design and Arkins/Festival Street Design
- Create I-70 Lid Conceptual Design Solutions
- Launch of a community based organization to support neighborhood needs
- Explore the develop of a Regional Tourism Act application for the National Western Center project



“Denver is taking bold steps to re-create a connected and sustainable community that will drive job creation and growth on a globally competitive scale.”

Mayor Michael B. Hancock



Project Manager

Kelly Leid

kelly.leid@denvergov.org , 720-865-2907**Deputy Manager**

Todd Wenskoski, 720-865-2905

todd.wenskoski@denvergov.org**Communications & Community Relations**

Erika Reyes Martinez

erika.martinez@denvergov.org,

720-865-2906

www.denvergov.org/NDCC